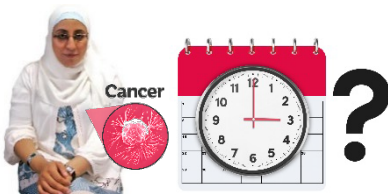


What breast cancer can look like

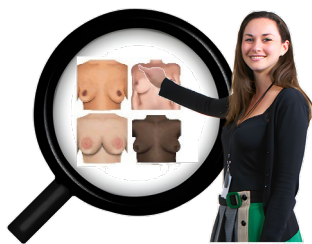


Breast cancer can happen at any time.



You can have a mammogram every 2 years from when you are 50 to 74 years old.

A mammogram is also called a breast screen.



It is also important to check your breasts to know what they look like and how they feel most of the time.

This helps you notice if your breasts have changed.



It is important to tell a doctor if you think your breasts have changed. Do not go to BreastScreen Victoria if you think your breasts have changed.



The doctor might look at and feel your breasts to see if you need more tests like:

- a breast scan
- a 3D mammogram
- an ultrasound
- other tests if they think you need them

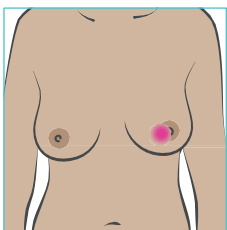
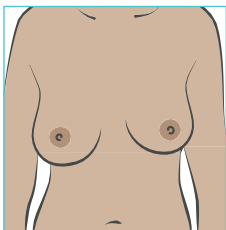


These are all ways to check if there is cancer inside your breasts.

Changes to your breast to look for

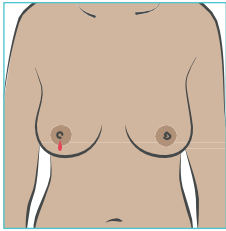
These can be if:

- your breasts change size or shape
- skin on your breast's change. This could be like:
 - puckering or dimpling – this is when the skin gets wrinkly or bumpy, like orange peel
 - redness or sore to touch



A change to the nipple like:

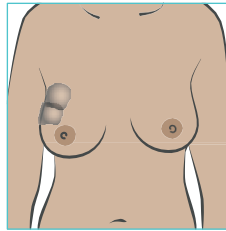
- dry skin
- redness
- it being pulled into the body and not sticking out



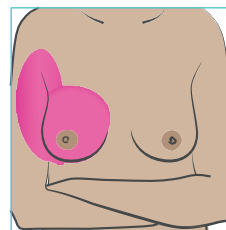
Liquid coming from a nipple without it being touched or squeezed.

You might feel a:

- new lump or a few lumps in your breast.
- changes in your arm or armpit, like swelling where the **lymph nodes** are.



The lymph nodes in your armpits can get bigger when your body is trying to stop you from getting sick.



A pain in your breast that you have not had before that does not go away.

Book at
breastscreen.org.au
or call **13 20 50**

TTY **13 36 77** if you have hearing
or speech difficulties



For more information or to change your details,
visit **breastscreen.org.au** or call **13 20 50**



For interpreter assistance, call **13 14 50**



Translated information:
breastscreen.org.au/translations



BreastScreen Victoria acknowledges the
support of the Victorian Government.